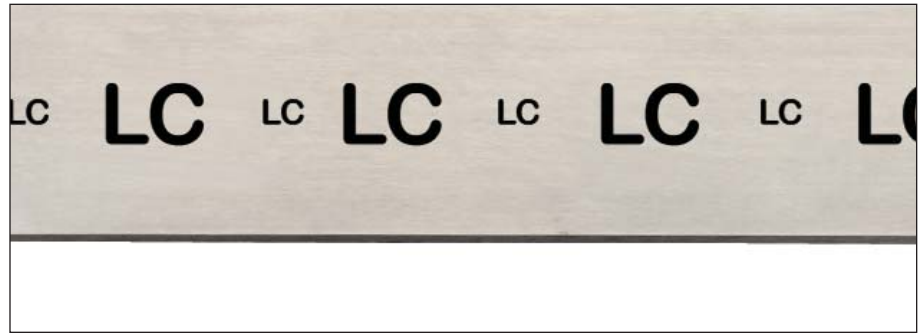




No. 498 Low Carbon

- ◆ **Substantial cost reductions over tool steel ground flat stock.** There are savings up to 60% because this is a low carbon steel and furnished in 24" lengths. This means that you get one-third more steel at less cost
- ◆ **Ideal for a wide variety of parts that don't require more expensive heat treated steels,** such as stripper plates, jigs, fixtures, machine and component parts, templates, etc.
- ◆ **This steel can be carburized or case hardened.**
After hardening, its physical properties, especially tensile strength, yield point, and Brinell hardness, are substantially higher
- ◆ **NOTE:** Thicknesses of 1/8" and under are made from AISI 1010 material
- ◆ The Starrett Company uses its own ground flat stock for many of its precision tool parts



Analysis

Starrett No. 498 Low Carbon Precision Ground Flat Stock is a .20 carbon fine-grained, killed steel, which can be carburized or case hardened. Very similar to AISI 1018.

Heat Treatment

For many applications, stock can be used unhardened. However, if surface hardening is desired, it can be carburized or case hardened. If carburized, a case of 1/32" will be obtained if the steel is held in carburizing salt at 1700° F for three hours.

Specifications

Furnished in 24" (610mm) lengths, ground straight and parallel.

No. 498 Low Carbon 24" Lengths

Thickness	Width	24" Length EDP No.
1/16"	1/2"	54866
	3/4"	54867
	1"	54868
	1-1/4"	54869
	1-1/2"	54870
	2"	54871
	2-1/2"	54872
	3"	54873
	3-1/2"	54874
	4"	54875
	5"	54876
	6"	54877
	8"	54878
10"	54879	
12"	54880	

Thickness	Width	24" Length EDP No.
3/32"	1/2"	54881
	3/4"	54882
	1"	54883
	1-1/4"	54884
	1-1/2"	54885
	2"	54886
	2-1/2"	54887
	3"	54888
	3-1/2"	58285
	4"	54889
	5"	54890
	6"	54891
	8"	54892
10"	58286	
12"	58287	

Thickness	Width	24" Length EDP No.
1/8"	1/2"	54893
	3/4"	54894
	1"	54895
	1-1/4"	54896
	1-1/2"	54897
	2"	54898
	2-1/2"	54899
	3"	54900
	3-1/2"	54901
	4"	54902
	5"	54903
	6"	54904
	8"	54905
10"	54906	
12"	54907	

NOTE: Prices on application for other lengths, widths and thicknesses.

(Continued on next page.)



No. 498 Low Carbon 24" Lengths (continued)

Thickness	Width	24" Length EDP No.
5/32"	1/2"	54908
	3/4"	54909
	1"	54910
	1-1/4"	54911
	1-1/2"	54912
	2"	54913
	2-1/2"	54914
	3"	54915
	3-1/2"	58290
	4"	54917
	5"	54918
	6"	54919
8"	58291	
10"	58292	
12"	58293	
3/16"	3/16"	57247
	1/2"	54921
	3/4"	54922
	1"	54923
	1-1/4"	54924
	1-1/2"	54925
	2"	54926
	2-1/2"	54927
	3"	54928
	3-1/2"	54929
	4"	54930
	5"	54931
6"	54932	
8"	54933	
10"	54934	
12"	57248	
1/4"	1/4"	57249
	1/2"	54935
	3/4"	54936
	1"	54937
	1-1/4"	54938
	1-1/2"	54939
	2"	54940
	2-1/2"	54941
	3"	54942
	3-1/2"	54943
	4"	54944
	5"	54945
6"	54946	
8"	54947	
10"	54948	
12"	54949	
5/16"	5/16"	57250
	1/2"	54950
	3/4"	54951
	1"	54952
	1-1/4"	54953
	1-1/2"	54954
	2"	54955
	2-1/2"	54956
	3"	54957
	3-1/2"	54958
	4"	54959
	5"	54960
6"	54961	
8"	54962	
10"	57251	
12"	57252	

Thickness	Width	24" Length EDP No.
3/8"	3/8"	54964
	1/2"	54965
	3/4"	54966
	1"	54967
	1-1/4"	54968
	1-1/2"	54969
	2"	54970
	2-1/2"	54971
	3"	54972
	3-1/2"	54973
	4"	54974
	5"	54975
6"	54976	
7"	54977	
8"	54978	
9"	54979	
10"	54980	
12"	54981	
7/16"	7/16"	54982
1/2"	1/2"	54983
	3/4"	54984
	1"	54985
	1-1/4"	54986
	1-1/2"	54987
	2"	54988
	2-1/2"	54989
	3"	54990
	3-1/2"	54991
	4"	54992
	5"	54993
	6"	54994
7"	54995	
8"	54996	
9"	54997	
10"	54998	
12"	54999	
9/16"	9/16"	55000
5/8"	5/8"	55001
	3/4"	55002
	1"	55003
	1-1/4"	55004
	1-1/2"	55005
	2"	55006
	2-1/2"	55007
	3"	55008
	3-1/2"	55009
	4"	55010
	5"	55011
	6"	55012
7"	55013	
8"	55014	
9"	55015	
10"	55016	
12"	57253	
3/4"	3/4"	55017
	1"	55018
	1-1/4"	55019
	1-1/2"	55020
	2"	55021
2-1/2"	55022	

Thickness	Width	24" Length EDP No.	
3/4" (Cont.)	3"	55023	
	3-1/2"	55024	
	4"	55025	
	5"	55026	
	6"	55027	
	7"	57254	
	8"	55028	
	9"	55029	
	10"	55030	
	12"	55031	
	7/8"	7/8"	55032
		1"	55033
1-1/4"		55034	
1-1/2"		55035	
2"		55036	
2-1/2"		55037	
3"	55038		
3-1/2"	57255		
4"	55039		
6"	55040		
1"	1"	55041	
	1-1/4"	55042	
	1-1/2"	55043	
	2"	55044	
	2-1/2"	55045	
	3"	55046	
	3-1/2"	55047	
	4"	55048	
	5"	55049	
	6"	55050	
	7"	57256	
	8"	55051	
9"	55052		
10"	55053		
12"	55054		
1-1/8"	1-1/8"	58288	
1-1/4"	1-1/4"	55055	
	1-1/2"	55056	
	2"	55057	
	2-1/2"	55058	
	3"	55059	
	4"	55060	
	5"	55061	
	6"	55062	
8"	55063		
10"	55065		
12"	57257		
1-1/2"	1-1/2"	55066	
	2"	55067	
	2-1/2"	55068	
	3"	55069	
	3-1/2"	55070	
	4"	55071	
	5"	55072	
	6"	55073	
8"	55074		
10"	55075		
2"	2"	55076	
2-1/2"	2-1/2"	58289	

NOTE: Prices on application for other lengths, widths and thicknesses.