

Galileo® Standard Series

AV200 AV300 AV350 EZ200 EZ300

Galileo AV300

Combines high-resolution images with the latest software and a precision mechanical platform to deliver 12" x 6" x 5.5" (300mm x 150mm x 140mm) of superb accuracy for a wide range of measuring applications. Galileo systems are easy to use, versatile, and accurate. With a variety of options, you can configure a Galileo system that's just right for your application and budget.

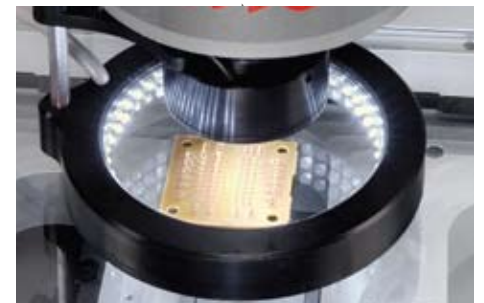
Note: The Galileo AV350 (shown on following spread with plus package) is also available in a standard configuration.



Galileo AV200

A compact bench top "2.5D" video measurement system that runs on either PC based QC5200 or the powerful QC300 metrology display and control unit.

The AV200 provides 8" x 4" x 6" (200mm x 100mm x 150mm) of X-Y-Z measurement range with Video Edge Detection and complete CNC control. Constructed on a precision granite base, the AV200 provides great value in a small, easy-to-use package.



Ring Light



Galileo EZ

These systems are general-purpose manual video-based measurement systems, ideal for quality assurance and inspection labs, and manufacturing, assembly and research facilities.

A precision mechanical bearing X-Y-Z stage and column translates data accurately and repeatably to a dedicated geometric readout or QC5200 software. Available in two sizes, these compact bench top systems are simple, precise and powerful!



Galileo Workstation

EZ Workstation



Specifications & Options	EZ200	EZ300	AV200	AV300	AV350
Bench-Top System	X	X	X	X	
Floor-Standing System					X
X-Y-Z Measuring Range (inch)	8" x 4" x 6"	12" x 6" x 5.5"**	8" x 4" x 6"	12" x 6" x 5.5"**	14" x 14" x 8"**
X-Y-Z Measuring Range (mm)	200 x 100 x 150	300 x 150 x 125*	200 x 100 x 150	300 x 150 x 125*	350 x 350 x 200*
X-Y Accuracy (in μm)	E1=3.5+5L/1000	E1=3.5+5L/1000	E2=1.9+L/1000	E2=1.9+5L/1000	E2=2.5+5L/1000
Z Accuracy (in μm)	E1=2.5+5L/1000	E1=2.5+5L/1000	E1=2.5+5L/1000	E1=2.5+5L/1000	E1=2.5+5L/1000
Multi-Sensor Compatible					
Control System/Software (see pgs. 22-23)	QC200, QC300 QC5200	QC200, QC300 QC5200	QC300 QC5200	QC300 QC5200	QC300 QC5200
Zoom Optics	6.5:1	6.5:1	6.5:1	6.5:1	6.5:1
S-Video Color Camera	X	X	X	X	X
Digital Video Color Camera			with QC5200	with QC5200	with QC5200
Surface Ring Illumination	LED or Fi-0	LED or Fi-0	LED or Fi-0	LED or Fi-0	LED or Fi-0
Transmitted Illumination	LED or Fi-0	LED or Fi-0	LED or Fi-0	LED or Fi-0	LED or Fi-0
Coaxial Illumination	0	0	0	0	0
Dark Field Quadrant Illumination (LED only)	0	0	0	0	0
Auxiliary Lenses (Optional)	.5X, 2.0X	.5X, 2.0X	.5X, 2.0X	.5X, 2.0X	.5X, 2.0X
Microscope Optics					0
Rotary Table Compatible				0	0
Workstation	0	0	0	0	0
Part Fixturing	0	0	0	0	0
Video Pixel Calibration Standard	0	0	0	0	0
Calibration Standards	0	0	0	0	0

X = Standard Feature, 0 = Option